

# Smartwear

Silvia Arredondo(EE), Malary Brandow(EE), Korbin Kovacs(EE),  
Michael Martin(EE), Zoe Pesce(EE)



simplebiomedical

**Mentor:** Dr. Dinesh Bhatia

**Sponsors:** Anupam Kumar, Pavneet Matharoo, Nishan Persad

**UTDesign II:** Summer 2018



## Project Progression

- **Simplebiomedical's Goal:** To develop affordable full body motion tracking that can be utilized for a wide variety of applications including physiotherapy, sports, or video game development
- **Our Goal:** To design a proof of concept and implement a preliminary foundation upon which our sponsor can further develop their product for market
- We started by researching different components needed for motion tracking
- Once components were identified we designed a schematic for the foundation of the hardware
- We then began focusing on programming the firmware for our boards
- We were able to transmit IMU data to our hub via serial port
- We are also able to transmit IMU data via Bluetooth Low Energy
- Project documentation is complete for handoff to sponsors

## Method

- Implement IMUs to track motion via magnetometers, accelerometers, gyroscopes
- Data from IMUs are transmitted via BLE 4.1 to an Android phone application
- The Daughter boards connect to a Mother board through micro HDMI cables using the SPI protocol
- The hub originally consisted of a MAX32630 microcontroller, a PAN1326B Bluetooth shield, and a MAX14690 PMIC
- Simplebiomedical will build upon our research and designs for the future iterations of their product

## Summer Objectives

- Begin fabrication process
- Collect and then transmit IMU data via BLE 4.1 to mobile device using the designed firmware
- Document project progression for handoff to Sponsors

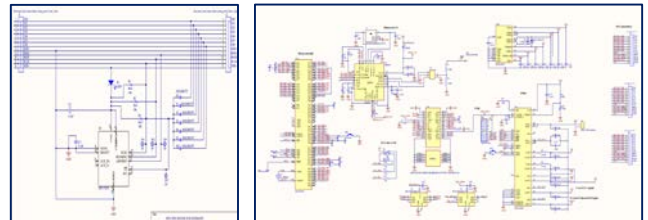
## Ethics statement

Devoted to industry standards and any applicable regulation. All code produced was referenced through open source repository.

## PCB Schematics and Footprints

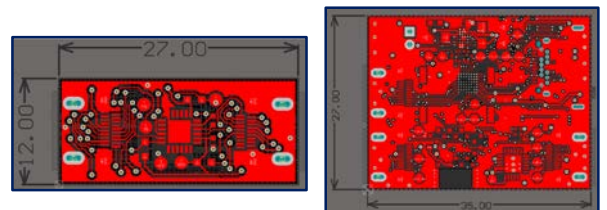
- Schematics designed for Hub and IMUs

*PCB Schematics for Daughter and MotherBoards:*



- PCB schematics sent to design engineers to develop into manufacturable footprints
- Designed firmware for collecting data from the IMUs to the microcontroller and for transmitting IMU data via BLE 4.1

*1st Iteration Daughter and Motherboard Footprints:*



## Firmware Design

*Programming for Data Collection*

- MBED IDE used
- Each IMU is programmed to have a unique ID and a timestamp upon data collection
- Data collection in FIFO register before BLE transmission

*Programming the Bluetooth*

- BLE 4.1 is used for data transmission
- 1 Packet (max of 20 usable Bytes/packet) is sent as it is collected from each IMU
- Connection via UART service

## Special Thanks To

Dr. Dinesh Bhatia for working with us during this Summer semester and Dr. Marco Tacca for his support.